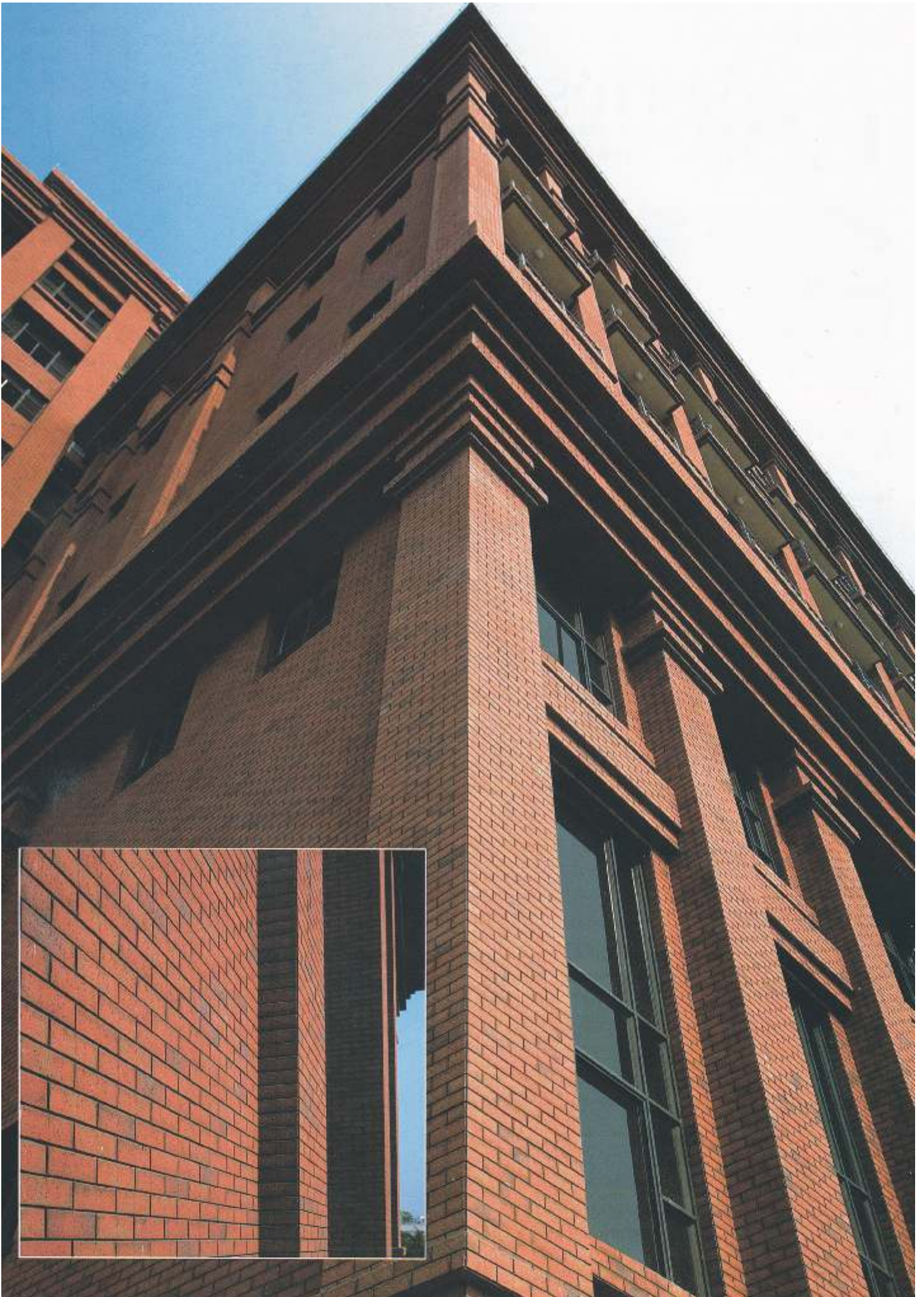


A tall, multi-story brick building with a facade of thin tiles. The building features decorative horizontal bands of lighter-colored tiles. The sky is clear blue, and there are green bushes in the foreground.

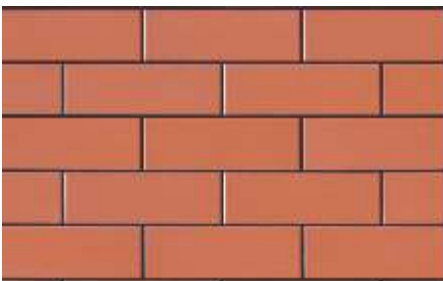
# UniStone<sup>TM</sup> CeraBrick

**Thin Tile for High rise exteriors**

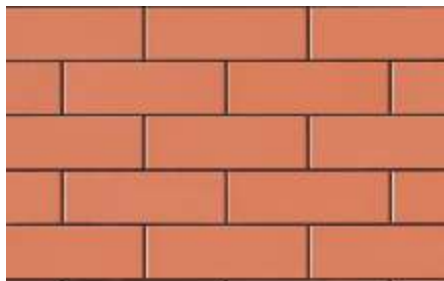
# TERACOTTA SERIES



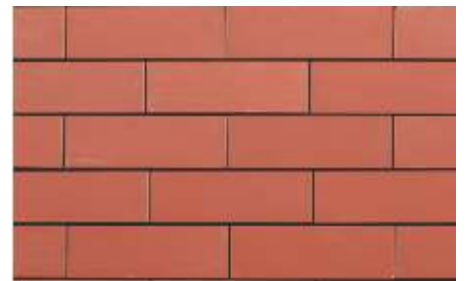
# TERACOTTA SERIES



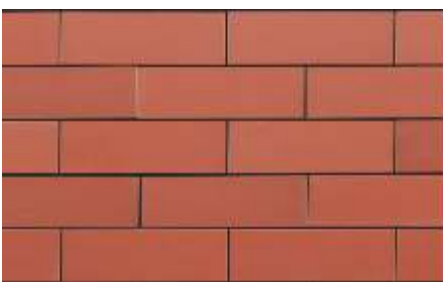
TERRACOTTA 1 (T-1)



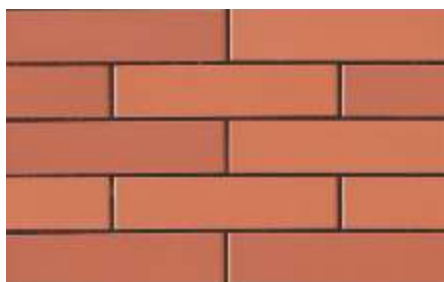
TERRACOTTA 2 (T-2)



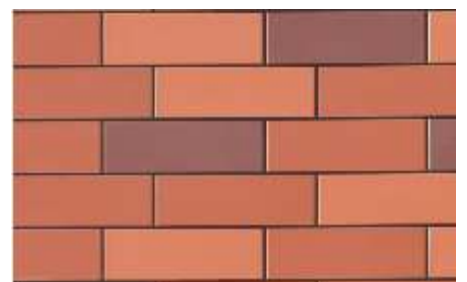
DARK TERRACOTTA 1  
(DT-1)



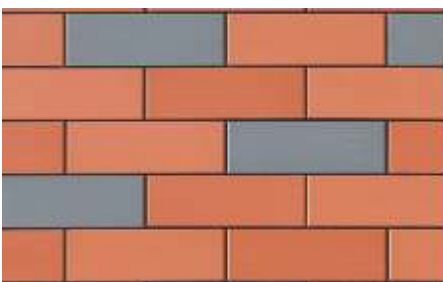
DARK TERRACOTTA 2  
(DT-2)



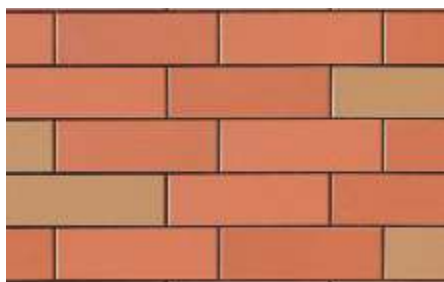
TERRACOTTA 1 + TERRACOTTA 2  
(T-1 + T-2)



TERRACOTTA 1+2 + CHOCOLATE 2  
(T-1 + T-2 + C-2)



TERRACOTTA 1+2 + DARK GREY 1  
(T-1 + T-2 + DG-1)



TERRACOTTA 1+2 + BROWN 1  
(T-1 + T-2 + B-1)



DARK TERRACOTTA 1+2  
(DT-1 + DT-2)

# GREY SERIES



# GREY SERIES



LIGHT GREY 1 (LG-1)



LIGHT GREY 1 + LIGHT GREY 2  
(LG-1 + LG-2)



LIGHT GREY 2 (LG-2)



LIGHT GREY 1+2 + ANTIQUE 1  
(LG-1 + LG-2 + A-1)



DARK GREY 1 (DG-1)



DARK GREY 2 (DG-2)



DARK GREY 1+2 (DG-1 + DG-2)

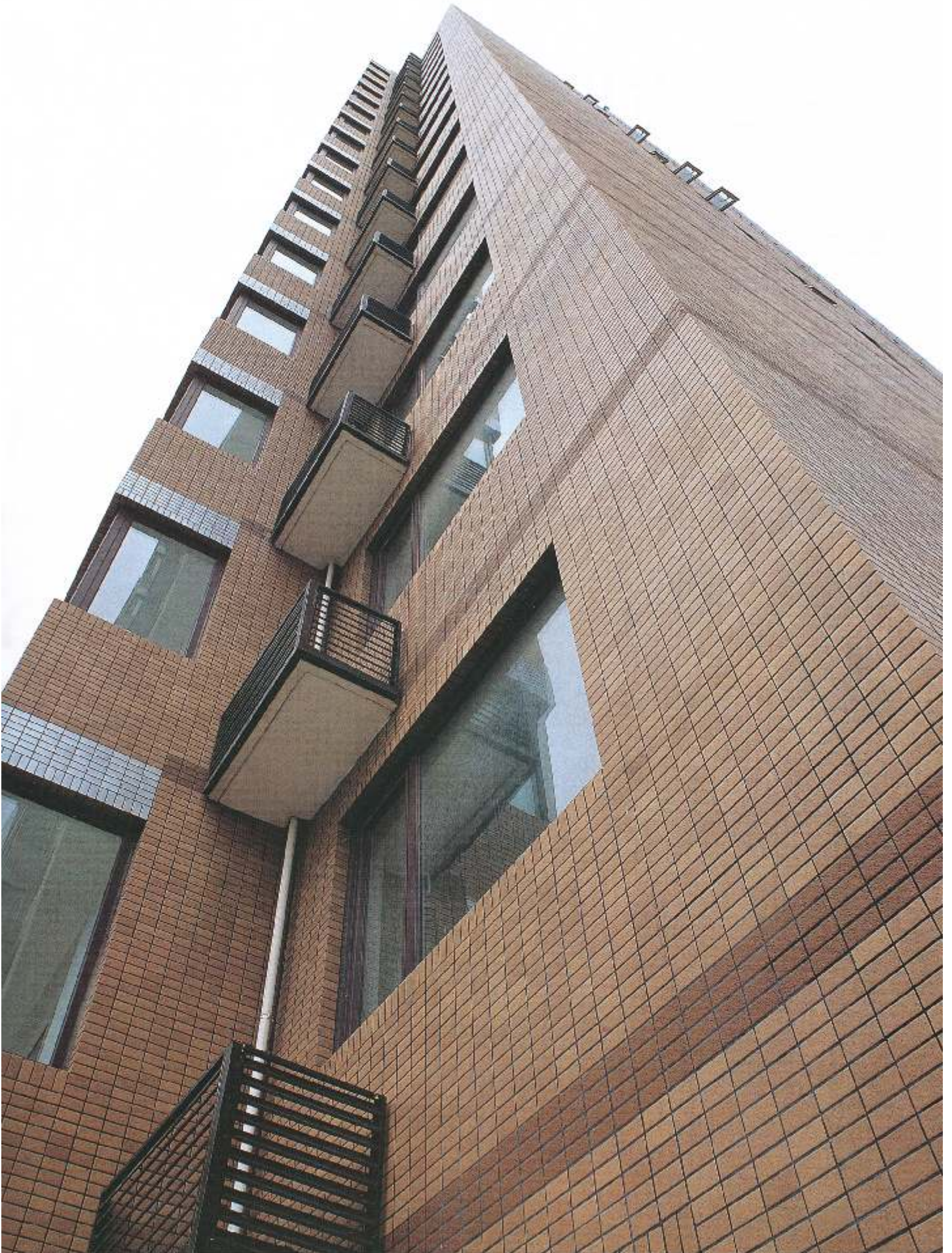


DARK GREY 1+2 + LIGHT GREY 2  
(DG-1 + DG-2 + LG-2)

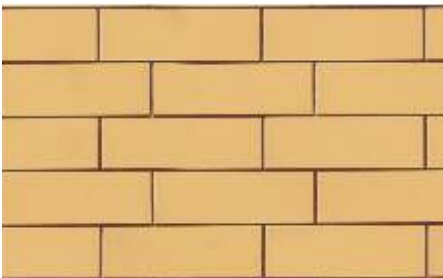


DARK GREY 1+2 + CHOCOLATE 2  
(DG-1 + DG-2 + C-2)

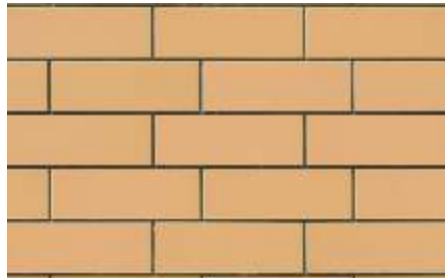
# BROWN SERIES



# BROWN SERIES



MUSHROOM 1 (M-1)



MUSHROOM 2 (M-2)



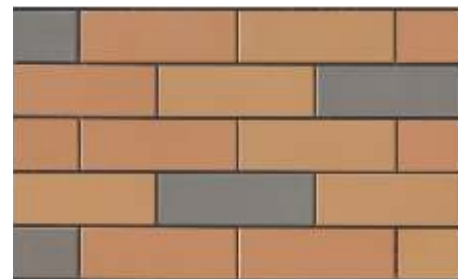
MUSHROOM 1+2 (M-1 + M-2)



BROWN 1 (B-1)



BROWN 2 (B-2)



BROWN 1+2 + DARK GREY 2  
(B-1 + B-2+DG-2)



CHOCOLATE 1 (C-1)

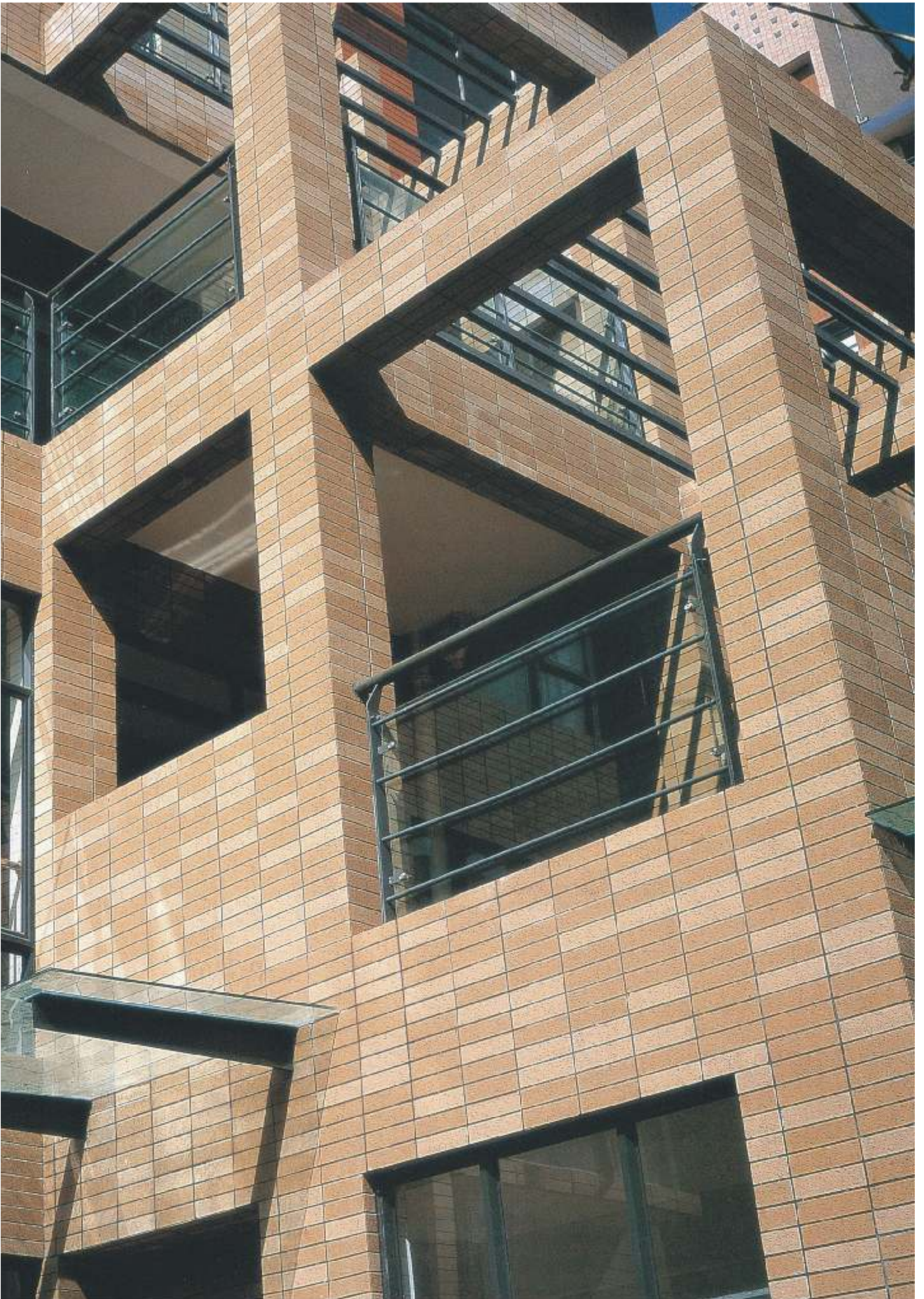


CHOCOLATE 2 (C-2)



CHOCOLATE 1+2  
(C-1 + C-2)

# IVORY SERIES





# IVORY SERIES



WHITE (W)



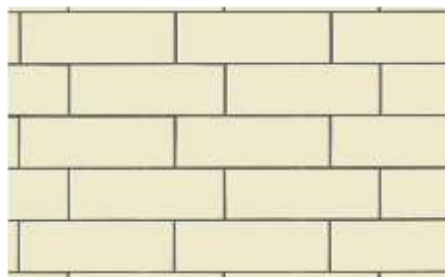
ANTIQUÉ 1 (A-1)



ANTIQUÉ 2 (A-2)



ANTIQUÉ 1+2 (A-1 + A-2)



IVORY 1 (I-1)



IVORY 2 (I-2)



EARTH 1 (E-1)

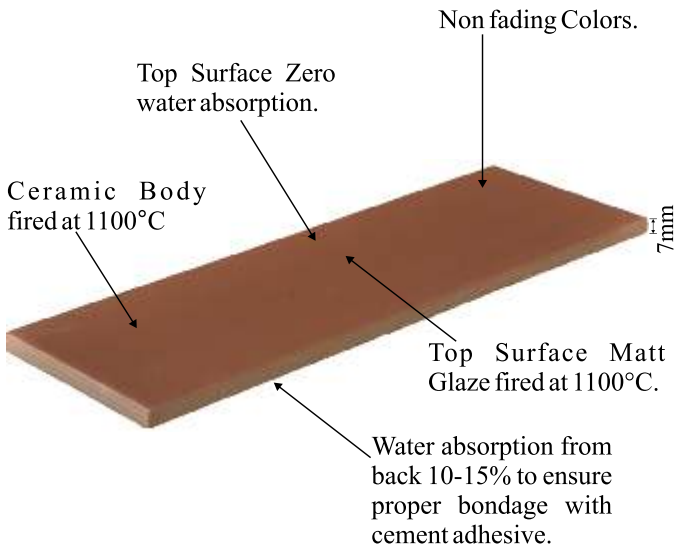
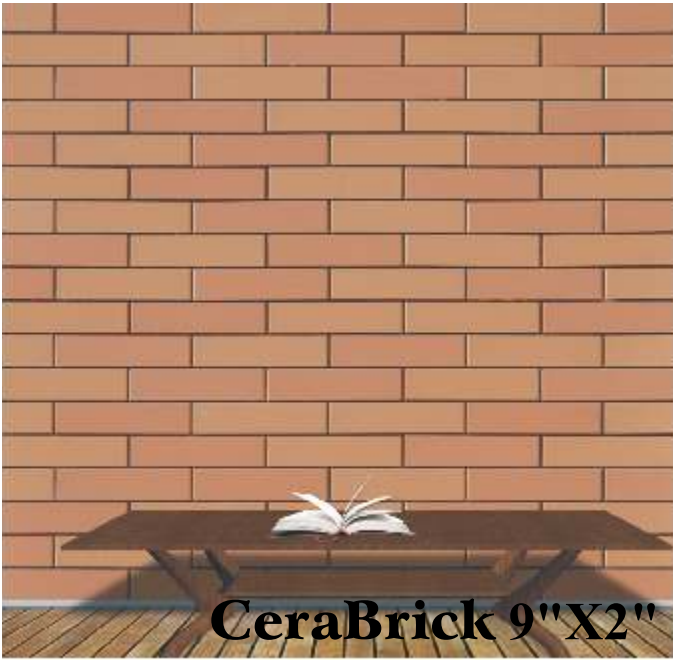


EARTH 2 (E-2)



IVORY 1 + IVORY 2 (I-1 + I-2)

# UNISTONE CERABRICK SIZES



# UNISTONE CERABRICK FIXING INSTRUCTIONS



Take Cement and fine sand in ratio of 1:1 and UniStone Polyfix liquid (instead of water) and mix the three to a creamy consistency.



Apply the cement adhesive on the base plaster with a notched trowel in 3-6 mm thickness.



Also apply a little quantity of the adhesive at the back of tile to cover the grooves.



Apply tiles on the adhesive with a sliding action. Make sure that there is 100% contact of tile to the base.



Apply grout in between grooves.



Clean the grout from the surface of the tiles immediately with a wet cloth of sponge.



## TECHNICAL SPECIFICATIONS

CHARACTERISTICS	EURO STANDARDS EN-159/B 333	UNISTONE CERABRICK VALUE
<b>DIMENSION &amp; SURFACE QUALITY</b>		
Deviation in length	± 0.5%	± 0.2%
Deviation in Thickness	± 0.5%	± 0.3%
Deviation in Squareness	± 0.6%	± 0.2%
Deviation in Wedging	± 0.5%	± 0.3%
Deviation in Flatness	± 0.5%	± 0.3%
<b>PHYSICAL PROPERTIES</b>		
Water Absorption	> 10%	14.16%
Bending Strength	> 150 Kg/cm <sup>2</sup>	180-200 Kg/cm <sup>2</sup>
Scratch Hardness (Mohs)	Min 3	Min 3
Crazing	1 Cycle	No Crazing at 3 Cycles
<b>CHEMICAL PROPERTIES</b>		
Strength Resistance Household Chemical	Min Class 2 Min Class B	CONFORMS
<b>THERMAL PROPERTIES</b>		
Thermal Shock	Resistant to 10 Cycles	CONFORMS
Thermal Expansion	Max - 9E - 06	CONFORMS

## TENDER SPECIFICATIONS FOR UNISTONE CERABRICK

Providing and fixing 9"X 2", 9"X3", 2¼"X15", 4½"X15" or 9"X15", 'CERA BRICK', 7mm thick Exterior matt glazed ceramic body wall cladding tiles in approved shade with specially designed deep grooves on back side of the tile for superior adhesion. The tiles should have excellent water absorption i.e. between 10–15% from back surface to assist superior adhesive bonding with substrate. The tiles weight shall be 1 Kg/Sq. Ft. and have zero water absorption from top surface and should be efflorescence proof. The tiles should be fixed on surface having rough plaster of cement mortar in 1:3 ratio (1Cement : 3Coarse sand) and the tiles should be fixed with 1:1 ratio by volume (1Cement : 1Fine sand) and mixed with **UniStone** Polymix liquid cement admixture, which should be applied by notch trowel. The tiles can also be applied with one component tile adhesive **UniStone** Ultimate or equivalent with notch trowel application. The **UniStone** 'Ultimate' Tile adhesive to be mixed with clean water in 1:3 ratio by weight (1water : 3 Tile adhesive powder).

# UNISTONE CERABRICK COLOUR CHART



IVORY 1 (I-1)



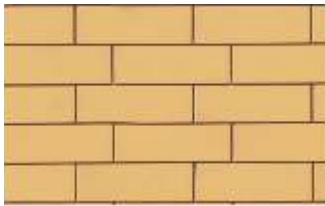
IVORY 2 (I-2)



EARTH 1 (E-1)



EARTH 2 (E-2)



MUSHROOM 1 (M-1)



MUSHROOM 2 (M-2)



BROWN 1 (B-1)



BROWN 2 (B-2)



ANTIQUÉ 1 (A-1)



ANTIQUÉ 2 (A-2)



LIGHT GREY 1 (LG-1)



LIGHT GREY 2 (LG-2)



DARK GREY 1 (DG-1)



DARK GREY 2 (DG-2)



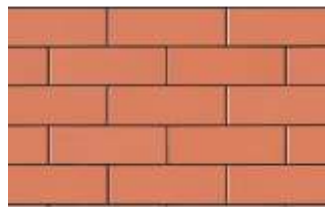
CHOCOLATE 1 (C-1)



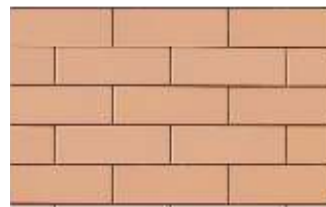
CHOCOLATE 2 (C-2)



TERRACOTTA 1 (T-1)



TERRACOTTA 2 (T-2)



PINK EARTH 1 (PE-1)



WHITE (W)



DARK TERRACOTTA 2 (DT-2)



DARK TERRACOTTA 1 (DT-1)

**UniStone** Interiors Pvt. Ltd.

17, Arihant Nagar, Punjabi Bagh West, New Delhi - 110026

TEL.: 011 - 45457070 (20 Lines), FAX:011 - 25225574

Architect's Help Line No.: +91 8826457070

**G. K. SHOW ROOM**

M - 58, Basement, M Block Market, Greater Kailash - II,  
New Delhi - 110048, TEL.: 011 - 4050 1723

Website : [www.unistone.in](http://www.unistone.in); E-mail : [info@unistone.in](mailto:info@unistone.in)