

A collage of various wood and laminate patterns. The background features several distinct designs: a dark brown wood grain in the top left, a light greenish-brown wood grain in the top center, a dark brown wood grain with wavy lines on the right, a light greenish-brown wood grain with a dark brown border in the center, and a dark brown wood grain with a radial pattern in the bottom left. A semi-transparent dark grey horizontal band is overlaid across the center, containing the text "Patterns 2021" in white. The text is centered and spans most of the width of the image.

Patterns 2021



Trencadis





The image features a background of a wood-grain texture, likely oak, arranged in a repeating hexagonal pattern. The wood grain is oriented vertically within each hexagon. A semi-transparent, dark grey horizontal band runs across the center of the image, containing the word "Ombre" in a white, sans-serif font. The overall color palette is warm and natural, ranging from light tan to deep brown.

Ombre

A close-up photograph of a dark wood floor with a complex geometric pattern. The wood planks are arranged in a way that creates several irregular, elongated shapes. These shapes are filled with a dark, veined marble material, creating a high-contrast, decorative effect. The wood grain is clearly visible, and the overall appearance is one of luxury and craftsmanship.

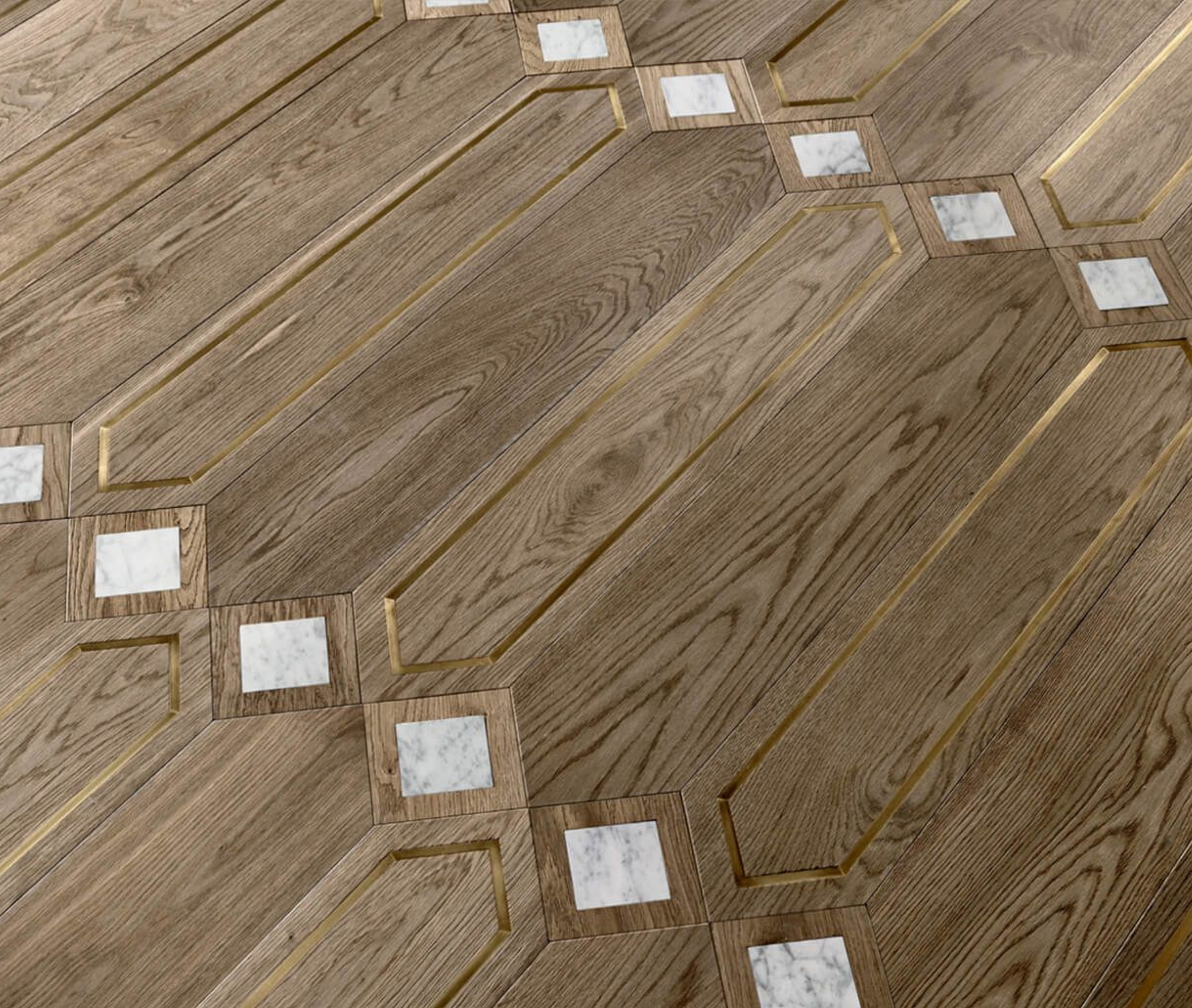
Matita



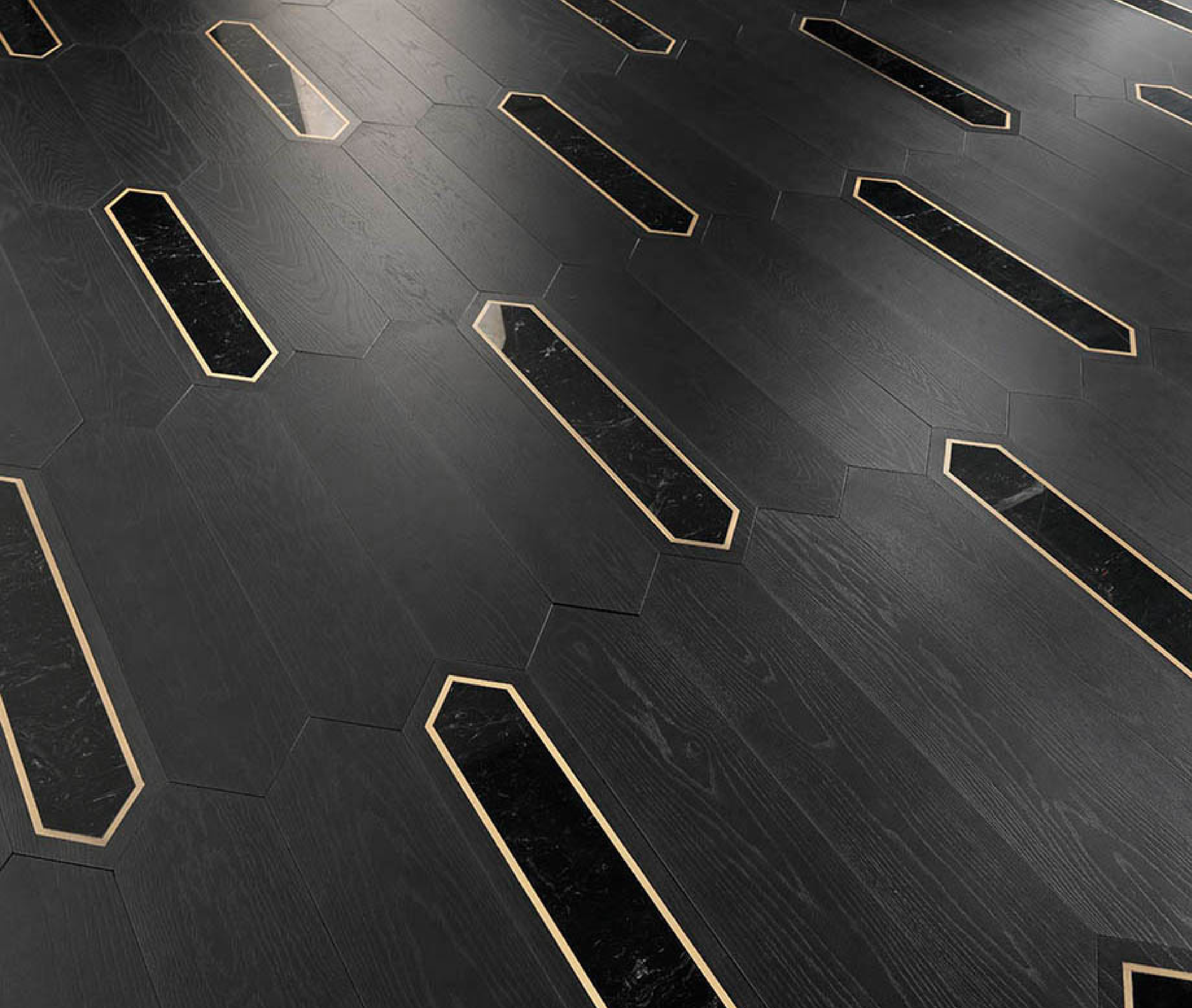














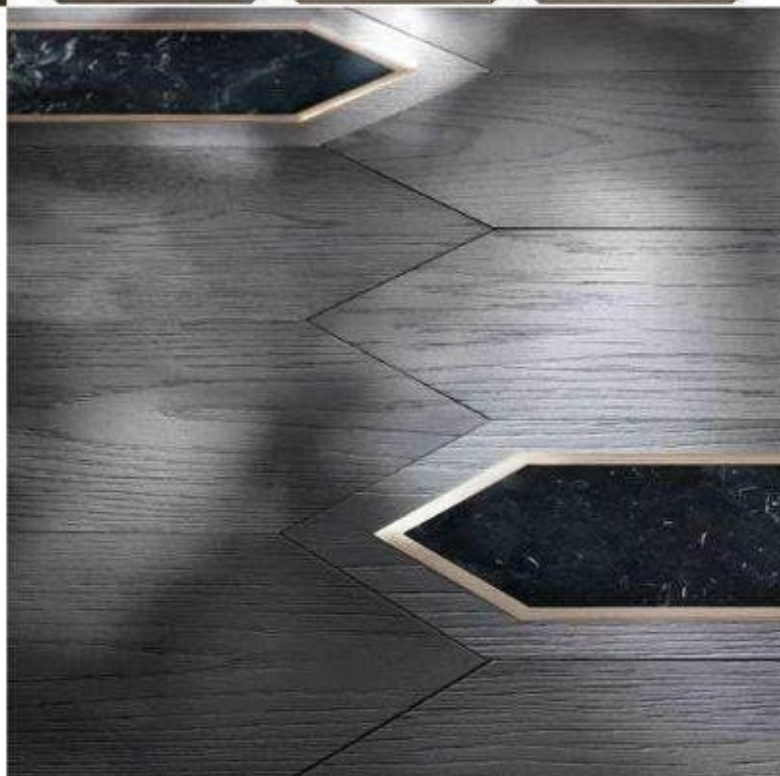
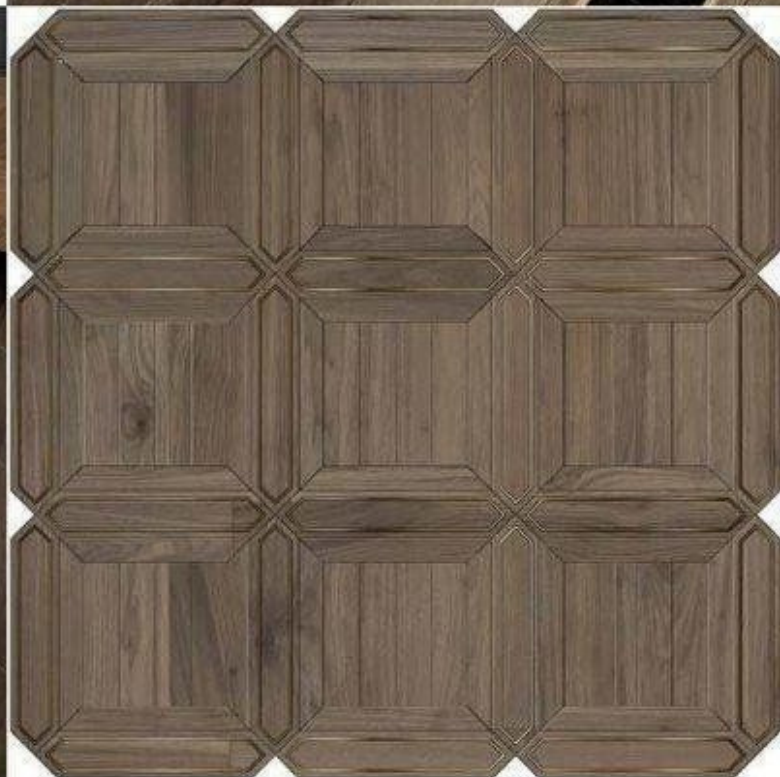
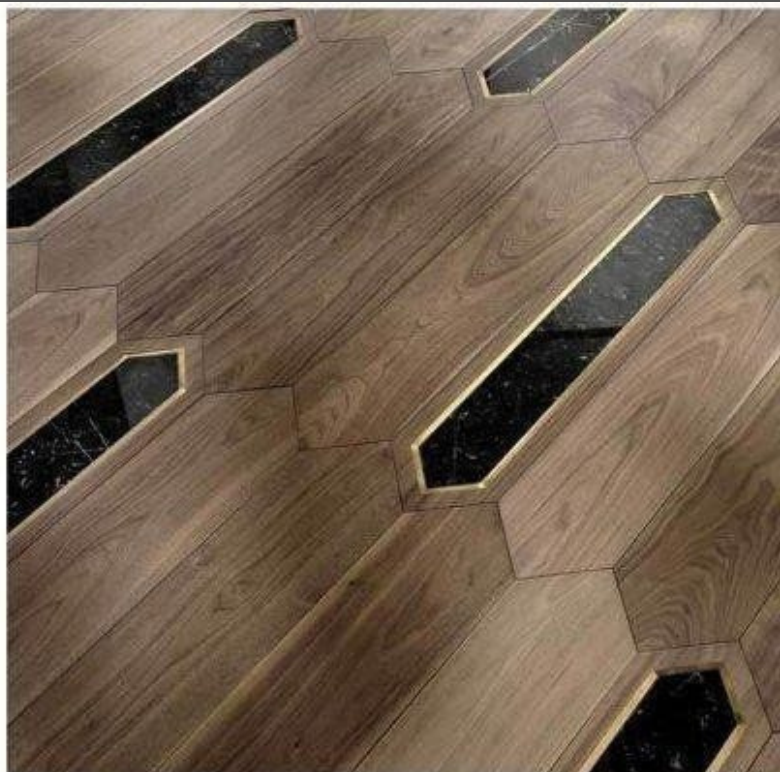












A black leather armchair is positioned in the upper right corner of the image. The floor is covered in a complex, repeating geometric pattern of interlocking shapes, possibly a stylized floral or starburst design, rendered in shades of brown and gold. The pattern is set against a dark, textured background. The word "Azalia" is centered in the middle of the image, overlaid on a semi-transparent dark band.

Azalia

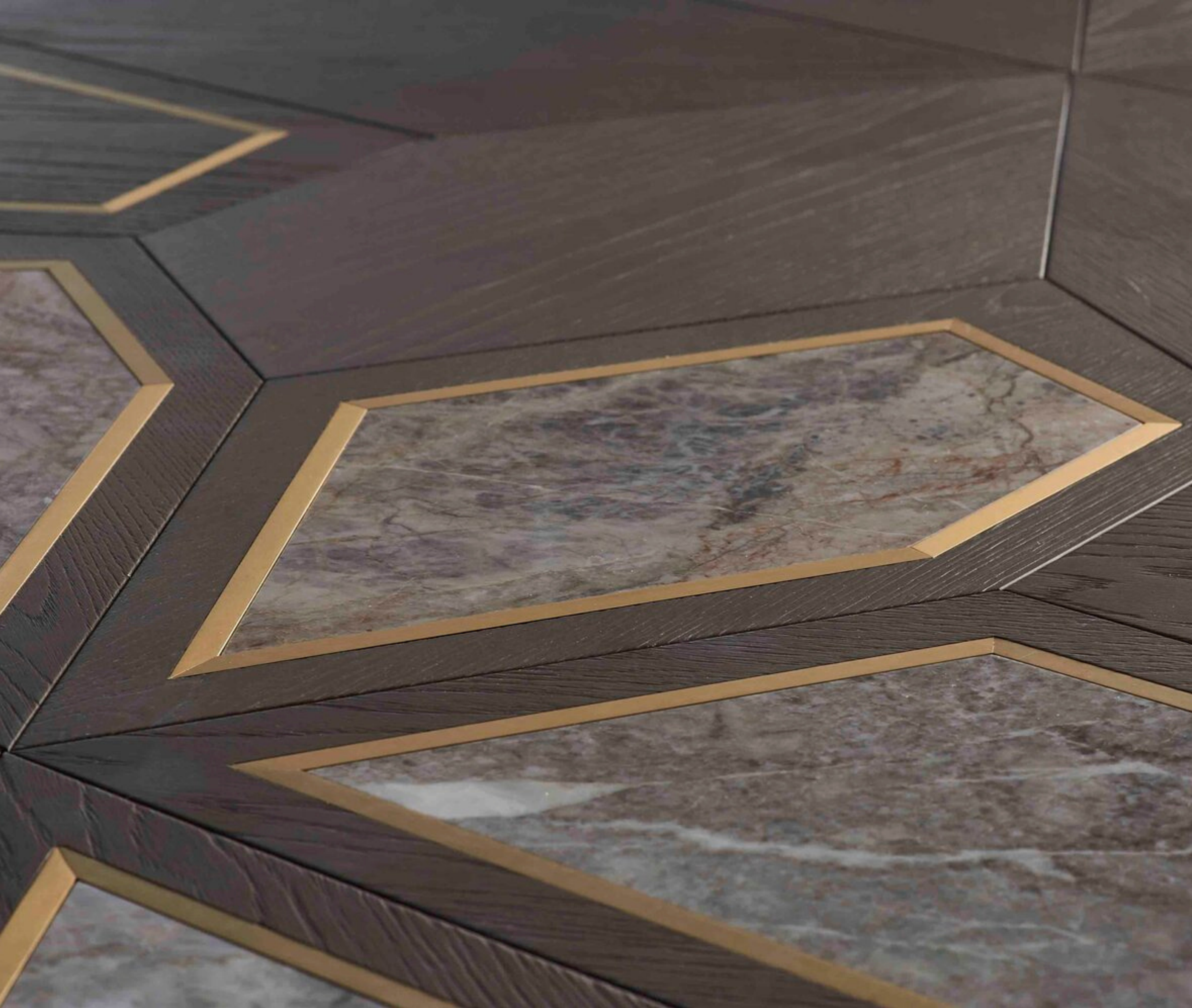












Petali











Hexagon